



MONTHLY MEMBERSHIP PROGRESS REPORT

District 14 C

Results as of: 06/30/2019

GMT: CINDY GREGG

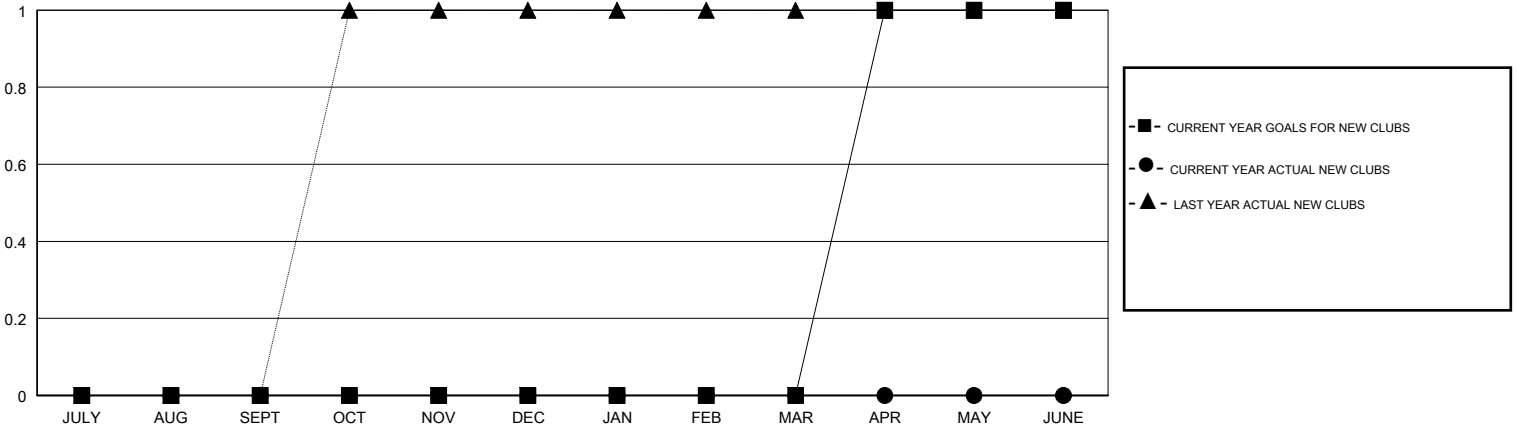
LOCATION PENNSYLVANIA

GMT CA

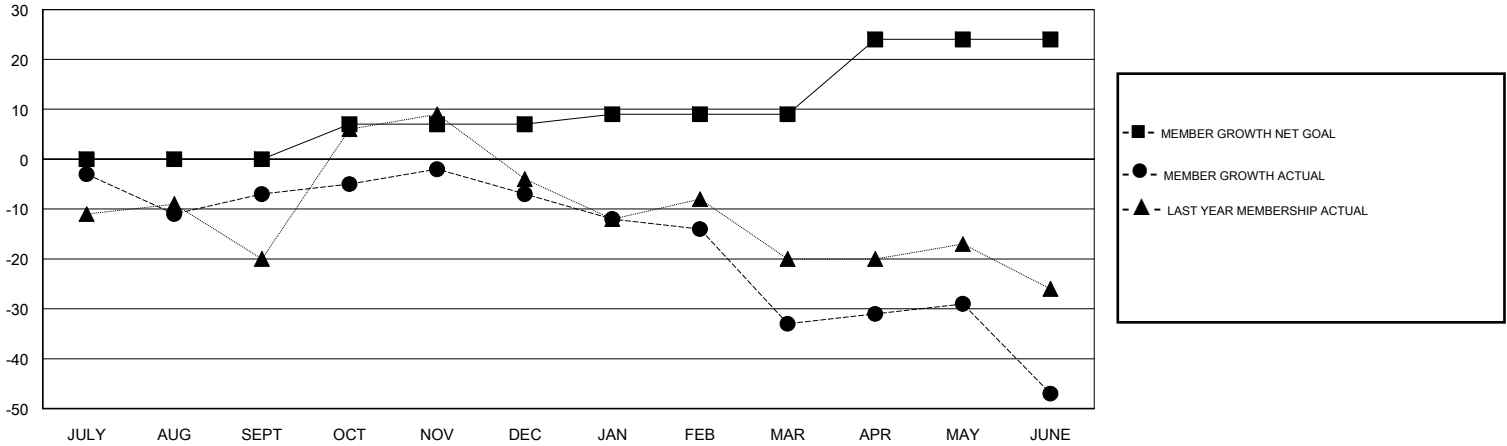
Clubs			
RESULTS FOR 2018-2019			
QUARTER	NEW CLUB GOAL	NEW CLUBS	DROPPED CLUBS
JULY/AUG/SEPT	0	0	0
OCT/NOV/DEC	0	0	0
JAN/FEB/MAR	0	0	2
APR/MAY/JUNE	1	0	0

Members			
RESULTS FOR 2018-2019			
QUARTER	MEMBER GROWTH NET GOAL	MEMBER GROWTH ACTUAL	DROPPED MEMBERS ACTUAL (including transfers)
JULY/AUG/SEPT	0	13	17
OCT/NOV/DEC	7	27	25
JAN/FEB/MAR	2	18	43
APR/MAY/JUNE	15	35	45

GOALS AND ACTUAL NEW CLUBS CUMULATIVE



GOALS AND ACTUAL MEMBERS CUMULATIVE



DROPPED CLUBS: 2	31 CLUBS OF 47 ADDED 1 OR MORE NEW MEMBERS	<u>GENDER DISTRIBUTION</u>	
DROPPED MEMBERS		MALE	987 (79.40%)
DECEASED	24	FEMALE	256 (20.60%)
CLUB CANCELLED	17	Women Percentage Fiscal Year Goal: 19%	
OTHER	89	TOTAL FAMILY UNIT MEMBERS	204
TOTAL	130	FAMILY MEMBERS PAYING HALF DUES	105

[CLICK HERE FOR CUMULATIVE MEMBERSHIP DATA](#)